



VIDYA DEVI JINDAL SCHOOL, HISAR
Aptitude Assessment For Admission (2024 - 25)
Class: IX
Sample Paper

Subject: English

Time Allowed :30 Minutes

Maximum Marks: 20

1. Read the text carefully and answer the questions that follow.

7 MARKS

The Python snake, also known as Ajar, is one of the most massively built snakes of the Indian subcontinent. It belongs to the Boidae family and is dependent on water to quite an extent. One of the unique features of the Rock pythons of India is that they can raise their body temperature above the ambient level through muscular contractions.

Python snake grows to an average length of somewhere around 4 metres, and its weight varies from 30 to 60 kilograms. An adult python is white or yellow in colour, depending upon its habitat. Rock Python of India is a lethargic creature, moving only while hunting a prey or when threatened. It shows great swimming ability and is quite at ease in water.

Python snakes can be found in dense as well as open Indian forests, but mostly in estuarine mangrove forests, acid scrub jungles and rainforests. They may live in abandoned mammal burrows, hollow trees, dense water reeds or mangrove thickets. However, pythons prefer to live near a permanent source of water like rivers and lakes. Rock Python of India is an endangered species, now partly protected by the Tamil Nadu Government. The reason for this is that it is killed for its fine skin, meat and even for medicinal purposes.

These snakes are carnivorous, and they feed on mammals, birds and reptiles indiscriminately, but seem to prefer mammals. Roused to activity on sighting prey, the snake advances with quivering tail and lunges with open mouth. Live prey is constricted and killed. One or two coils are used to hold it in a tight grip. The Prey, unable to breathe, succumbs and is subsequently swallowed. After a heavy meal, they are disinclined to move. If forced to move, hard parts of the meal may tear through the body.

- i . What has made rock python an endangered species? (20-30 words) 1
- ii. How does the rock python increase its body temperature? 1
- a. By shedding its skin.
- b. By increasing its blood pressure.
- c. By contracting muscles.
- d. None of the above.

- iii. What will happen if Python snakes are forced to move after a heavy meal? (20-30 words) 1
- iv. On which factor does the colour of the Python depend? 1
 a. its weight b. its habitat c. its length d. its prey
- v. Which is the preferred habitat of python snakes? 1
 a. Near rivers and lakes b. Near sea beaches
 c. Near sand dunes d. Near glaciers
- vi. The term ‘**quivering**’ as used in the passage means _____. 1
 a. steady b. running c. confusing d. trembling
- vii. The word ‘**constricted**’ is used in the passage to denote _____. 1
 a. compressed b. stretched c. inflated d. loose

2. Attempt the following tasks, as directed.

- i. Fill in the blanks by using the correct word given in the bracket. 8X 0.5= 4
- a. When a mosquito _____ (bite, bites, bit, is biting) a person, the microbes enter into the blood stream.
- b. Neither of the boys _____(has, have) scored well.
- c. The majority of applicants _____ (is, are) girls.
- d. Prachi _____ (has to, can, should, had to) work hard as one week is left for her exams.
- e. You _____ (should, need, will, may) not worry, your money is safe.
- f. Please take _____ (a, an, the, this) keys along with you.
- g. Hundred miles _____ (is, are) a long distance.
- h. Anyone _____ (may, can , should, would) make mistakes.
- ii. Write in Reported Speech:
 Rohan said, “ I am too tired to go any further.”

3. Rearrange the following words /phrases to form meaningful sentences. 3x1=3
- a. members/as/team/of/the captain/ arrived/ the /as well/ the/ has
- b. his/wasted/ much/ is/has/of/ wealth/been.
- c. sharply/ the/ on/ divided/the bill/ were/ parliament/

4. Expand the following outline into a complete story. Give appropriate heading and moral of the story. 5
- A soldier walks through a market – sees a man selling caged birds – approaches him – buys all the birds – sets them free – people think him to be mad – all laugh at him – asks them the reason – they ask why he has freed all the birds – replies that he has been a prisoner of war – knows the sufferings of slavery.

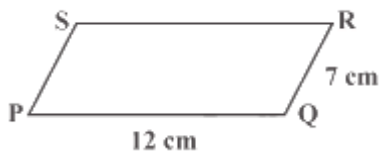
SUBJECT MATHEMATICS

Time Allowed :30 Minutes

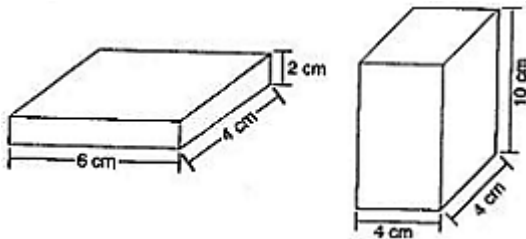
Maximum Marks: 20

Instruction: Each question carries 2 marks.

- 1) Verify the property $x \times (y \times z) = (x \times y) \times z$ of rational number by using $x = 1$, $y = -12$ and $z = 14$. And what is the name of this property?
- 2) Solve: $3(5x - 7) + 2(9x - 11) = 4(8x - 7) - 111$
- 3) Find the perimeter of the parallelogram PQRS.



- 4) Find the least number that must be added to 1300 so as to get a perfect square. Also find the square root of the perfect square.
- 5) Find if 15625 is a perfect cube?
- 6) A machinery worth Rs. 10500 depreciated by 5%. Find its value after one year.
- 7) Add: $4y(3y^2 + 5y - 7)$ and $2(y^3 - 4y^2 + 5)$
- 8) Find the total surface area of the following cuboids:



- 9) Simplify: $[(12)^2 - (14)^3] - 1 \times 2 - 3[(12)^2 - (14)^3]$.
- 10) Obtain the factors of $z^2 - 4z - 12$.

SUBJECT: SCIENCE

Time Allowed :30 Minutes

Maximum Marks: 20

General Instructions :-

- i) This question paper consists of 14 questions.
 - ii) All questions are compulsory.
 - iii) Marks are indicated against each question.
-

1. The term used for the process of separation of grains from the chaff is: [1]

- a. Sieving
- b. Threshing
- c. Winnowing
- d. Handpicking

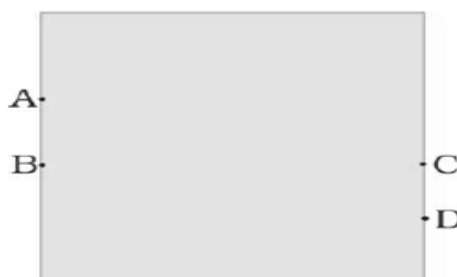
2. Naphthalene balls obtained from coal tar are used as: [1]

- a. mosquito repellent
- b. honeybee repellent
- c. moth repellent
- d. snake repellent

3. Reproduction by budding takes place in : [1]

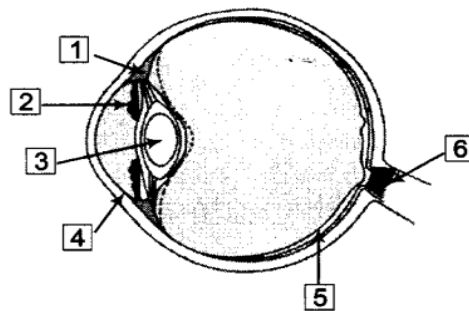
- a. Hydra
- b. Paramecium
- c. Amoeba
- d. Bacteria

4. A water tank has four taps fixed at points A, B, C, D as shown in Figure. The water will flow out at the same pressure from taps at [1]



- a. B and C
- b. A and B
- c. C and D
- d. A and C

5. A toy car released with the same initial speed will travel farthest on : [1]
- muddy surface
 - polished marble surface
 - cemented surface
 - brick surface.
6. Visually impaired people can read and write using : [1]
- electronic writer
 - digital pens
 - braille system
 - hearing aids
7. Name the process in yeast that converts sugars into alcohol. [1]
8. What is the unit for expressing the calorific value of a fuel? [1]
9. Name the hormone produced by the pancreas and the disease caused due to lack of its production. [1]
10. Human are _____ while birds are _____. [1]
11. What force will produce a pressure of 20,000 Pa on an area of 0.07m^2 ? [2]
12. Differentiate between Manure and Fertilisers. [2]
13. a) Compare LPG and wood as fuels.
- b) Fuel must be heated to its _____ before it starts burning. [3]
14. a) Look at the diagram of Human Eye and Label any **four parts** from 1 to 6.



- b) The distance between the object and its image formed by a plane mirror appears to be 18 cm. What is the distance between mirror and the object? [3]

SUBJECT: SOCIAL STUDIES

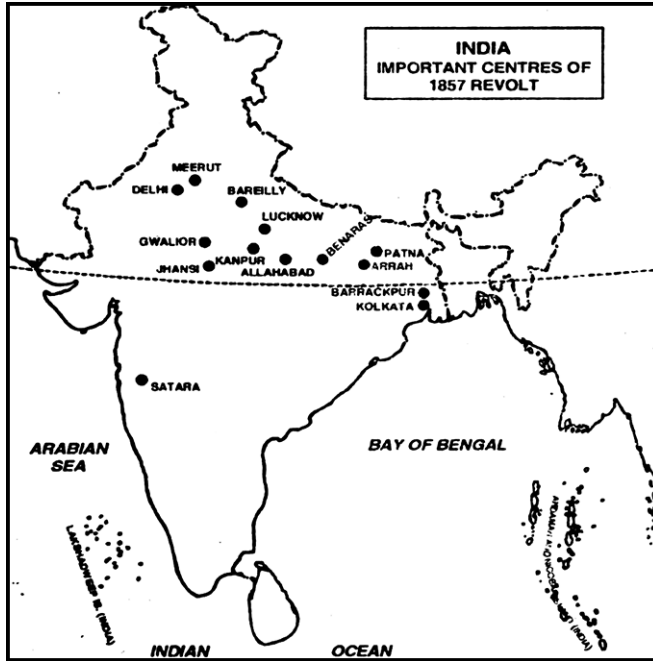
Time Allowed :30 Minutes

Maximum Marks: 20

1. Resources are distributed unequally over the earth because of 1
 - (a) the different natural conditions
 - (b) level of development
 - (c) technological levels
 - (d) all of these
2. What kind of role citizens of India play in electing representatives? 1
 - (a) Indirect
 - (b) No Role
 - (c) Direct
 - (d) Submissive
3. The international demand of indigo was affected by the discovery of 1
 - (a) synthetic dyes
 - (b) wood
 - (c) blue colour
 - (d) none of these
4. Which of the following is the decision taken by British to reform the Indian Society? 1
 - (a) Law against the practice of Sati
 - (b) They encouraged the remarriage of widow
 - (c) English education was actively promoted
 - (d) All of the above
5. Please explain what this picture means ? 2



6. Distinguish between intensive farming and extensive farming . 2
7. Why did the British develop hill stations like Shimla , Darjeeling and Missouri? 2
8. **What would happen if there were no restrictions on the power of elected representatives?** 2
9. Study the following map and answer the questions given :



- a. In which place did Rani Laxmibai lead the revolt ? 1
- b. In which place of Uttar Pradesh the revolt of 1857 start ? 1
- c. In which place the revolt was led by Begum Hazrat Mahal? 1
10. Explain how the British who came to India as traders were able to conquer the entire country. 5

OR

What are the features of a secular country ? What are the advantages of living in a secular country ?